

Since 1981 Camtac has been developing tools and accessories perfected for the mining, sewage and paper industry.

All tooling is produced in house.

We make springs and clips as well as the tooling necessary to produce them. Multi-stage pneumatic presses unique to the aluminium industry as well as the development of the Camtac Roller, Camtac Tracking Valve, stainless steel Spraybar and the control system.

Alongside these exciting developments new springs and clips are being produced.



CAMTAC SPRAYBAR...

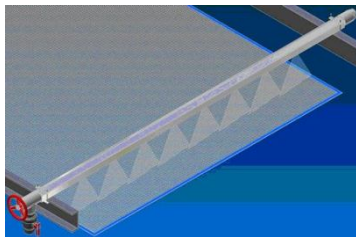
The Camtac Spraybar is manufactured from stainless steel and PVC plastic. Both types incorporate a tri-lobal brush inside the entire length of the Spraybar.

Should the nozzles become blocked the Spraybar can be cleaned while in operation. The nozzles are inverted inside the pipe so that the brush cleans the aperture when it is turned via a handwheel. A flush valve allows the dirty water to be expelled while the Spraybar is operating. The Spraybars are self supporting and need only to be clamped to the frame of the machine.

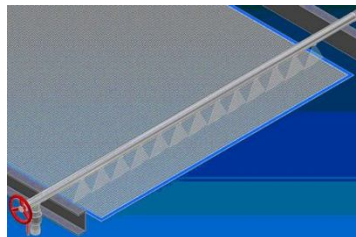
Nozzles are made from 316 stainless steel and are held in place via a stainless steel circlip. Spraybars with unions can be supplied to aid in the orientation of the flush valve.

Oscillating Spraybars for the paper industry is available as well as an oscillating control mechanism to retrofit existing installations without removing the Spraybar.

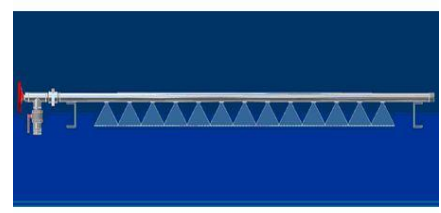
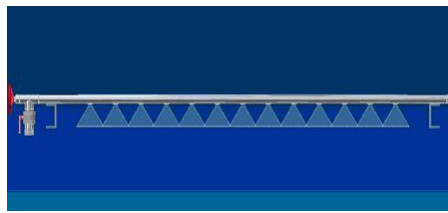
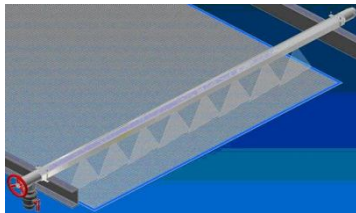
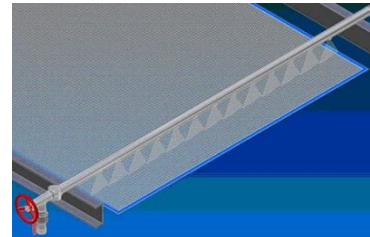
The PVC Spraybar



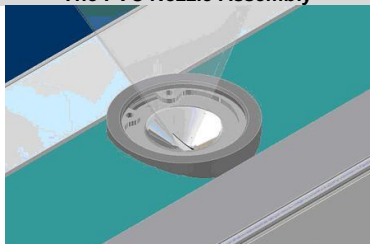
The Standard Stainless Spraybar



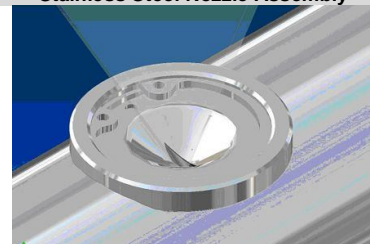
The Stainless Spraybar with union



The PVC Nozzle Assembly



Stainless Steel Nozzle Assembly



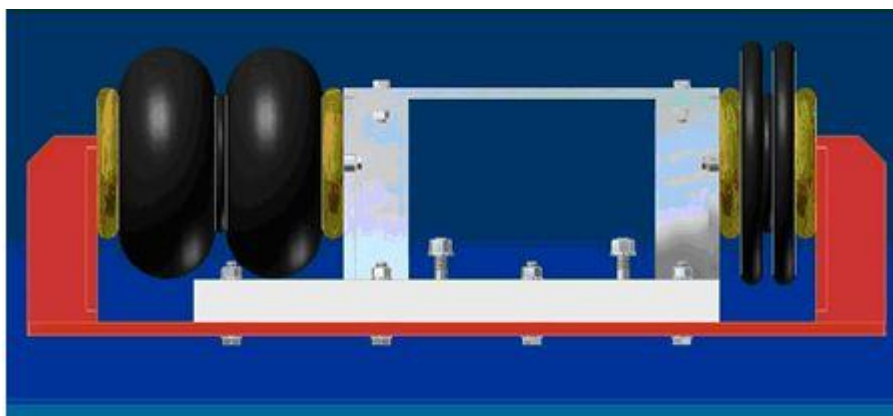
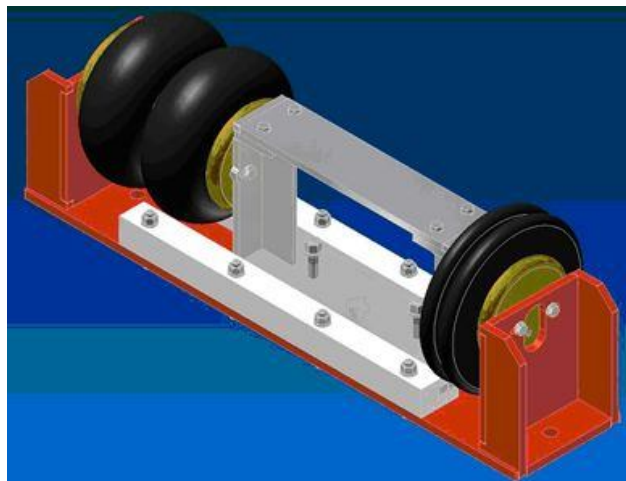


CAMTAC TRACKER...

The Camtac Tracker is used in conjunction with the Camtac Tracking Valve. It is utilised generally in linear screen filters to steer the belt in reaction to the Tracking Valves input. Two convoluted rubber bellows actuate the slide which incorporates the plumber block bearing supporting one end of the roller. The stroke length is 140 mm. Materials used for construction vary depending on application, generally 316 stainless steel and high density polyethylene slides. Fasteners are all 316 stainless steel. 304 stainless and mild steel combinations can be made to order.

The Camtac Tracker is equivalent to the 'DELTRACKER 140 Stroke'.

A unique design feature on the Camtac Tracker is the ability to utilise bellows cylinders from all the manufacturers whether they have inline or offset ports.





CAMTAC TRACKING VALVE...

The Camtac Tracking Valve is a pneumatic valve used to control the "Tracking" of belts while they are in motion automatically. The belt rubs against a ceramic sleeve which operates the valve to keep the belt centered and running true. The Valve is manufactured from stainless steel and wearing parts from plastic. Operating pressure from 0.5 bar to 4 bar (7 psi to 58 psi) and temperature from -150° C to 60° C (-238° F to 140° F), high temperature version on application.

Two types available, Standard and Universal.

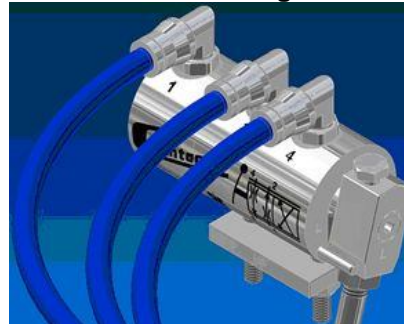
Standard type is mounted on only one side of the machine while the Universal can be mounted on both sides.



Standard Tracking Valve



Universal Tracking Valve





CAMTAC SPRINGS, CLIPS AND ROLLERS...

Camtac manufactures springs, clips and rollers in small to medium production quantities from a variety of materials to customer's specifications.

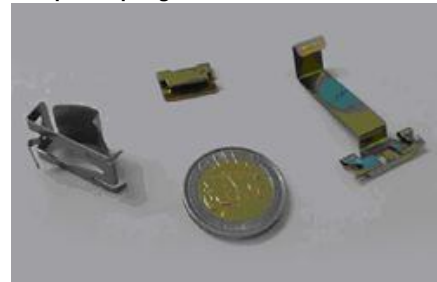
Pre-Galvanised Mild Steel Clips



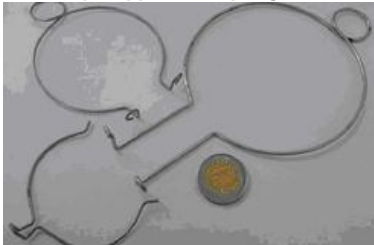
Down-light Torsion Springs in Spring Steel



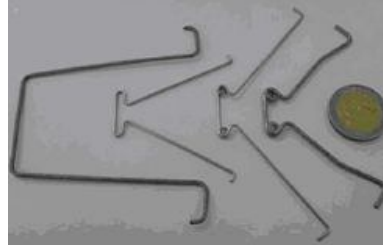
Clips in Spring Steel Hardened & Plated



Lamp Supports in Spring Steel



Wishbone Springs in Spring Steel



Wishbone Springs in Spring Steel



Rollers for Sliding Doors & Windows



Wire & Rod Forms in Spring & Stainless Steel



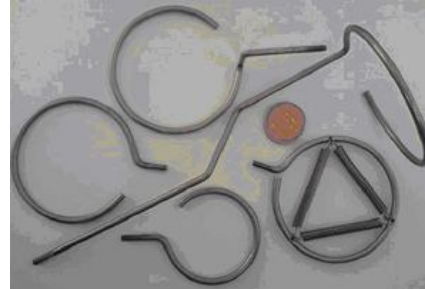
Streetlight Toggle Clips in Stainless Steel



Stainless Steel Pre-Hardened & Half Hard



Stainless Steel Lamp Supports



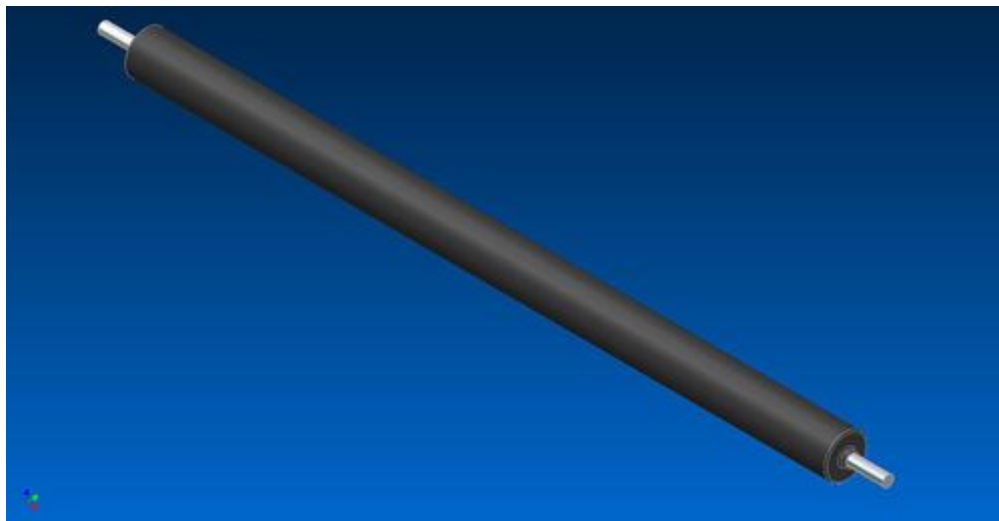


CAMTAC DLS ROLLER...

Rubber lined rollers for Linear screen c/w solid shaft.

Rollers are manufactured from various size tubes and bright mild steel shafts according to customer specific sizes.

The rollers are rubber lined with 6mm thick, high quality steam cured natural rubber.



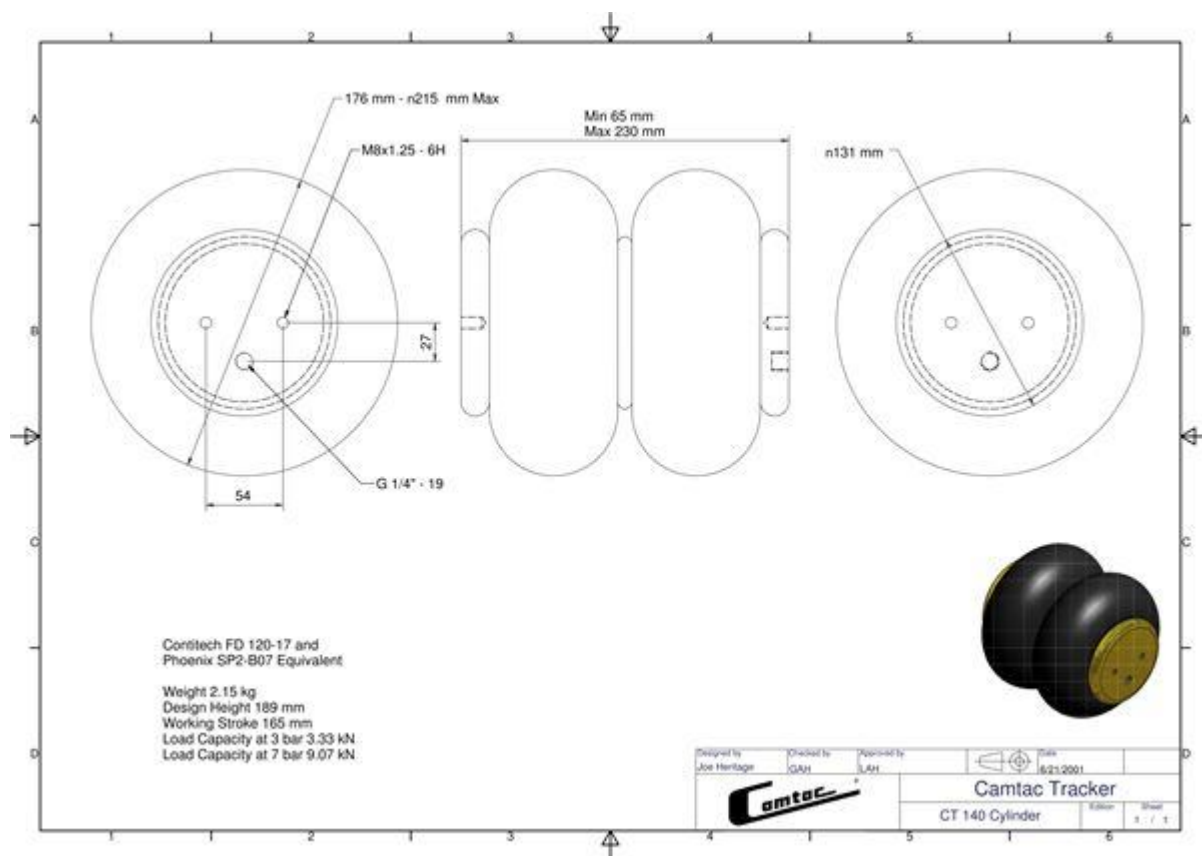


CAMTAC TRACKER CYLINDER...

Bellows - Contitech FD120-17 and Phoenix SP2-B07 equivalent.

The bellows weigh 2.15kg with a design height of 189mm.

The working stroke of the bellows are 165mm and a load capacity of 3.33kN at 3 bar or 9.07kN at 7bar.





CONTACTING CAMTAC ...

Tel: +27 (0)83 347 1477
Fax Factory: +27 (0)86 553 8128
Fax Accounts: +27 (0)86 553 8126
E-mail Factory: info@camtac.com
E-mail Accounts: accounts@camtac.com

Arthur Heritage - **Cell:** 083 288 3743
Managing - Member
Joe Heritage - **Cell:** 083 407 5094
Technical - Member
Guy Heritage - **Cell:** 083 555 4998
Marketing - Member
Estie Venter -
Accounts

P. O. Box 22
Tarlton
1749
Republic of South Africa

Plot 67
Vlakplaas
Krugersdorp
Republic of South Africa